

INTEGRATED SOLUTIONS

CUSTOM TOOLS

ENGINEERING SERVICES

FULL-LINE DISTRIBUTOR

INTEGRATED SUPPLY

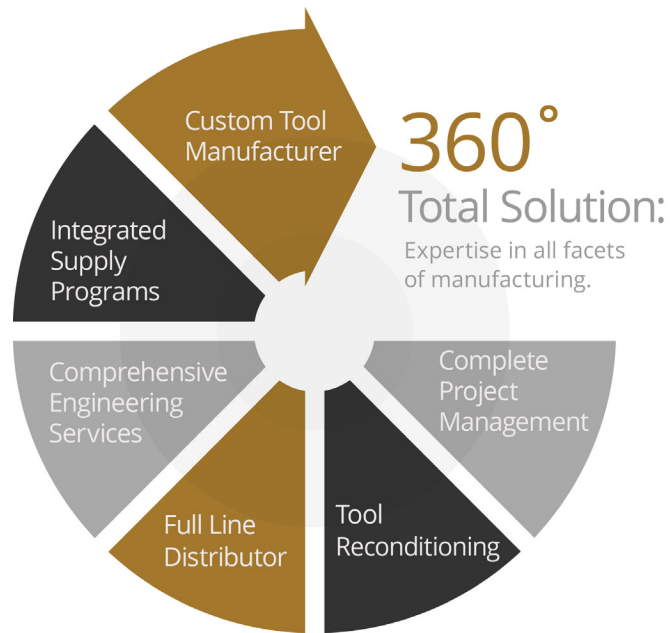
VENDING/CRIB PROGRAMS

TOOL RECONDITIONING

PROJECT MANAGEMENT

360° TOTAL SOLUTION

Cline Tool is one of the largest custom tool manufacturers in the United States, but what sets us apart from the competition is our full range of value-added services and programs — we call it the **360° Total Solution**. It's a unique combination of expertise in all facets of manufacturing that focuses on improving operational efficiency and driving cost reductions.



One of the Largest Custom Cutting Tool Manufacturers in the U.S.

Comprehensive Engineering Services

Full-line Distributor representing the world's most respected brands.

Integrated Supply Programs

Tool Reconditioning

Complete Project Management

THE CLINE TOOL PROMISE: MEASURABLE COST SAVINGS — YEAR AFTER YEAR

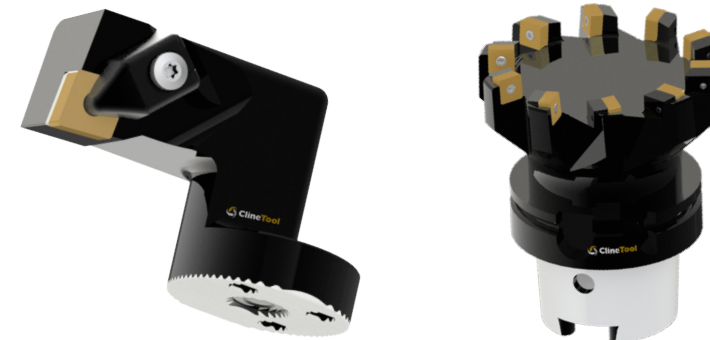
The experienced staff at Cline Tool can help with the challenges you face every day: Cost objectives, deadlines, limited resources and continuous improvements. Let us put our unique combination of engineering, manufacturing, tool distribution and integrated supply management skills to work for your organization.

**EXPERTISE YOU CAN RELY ON.
REAL COST SAVINGS YOU CAN COUNT ON.**

ENGINEERED SOLUTIONS

Our core business since 1948 has been designing and manufacturing custom cutting tools for industry-leading manufacturers. Whether your application requires a simple tool or a complex design capable of machining multiple features at once, we have the expertise to design and manufacture a tool to fit your requirements.

- ✓ Skilled tool craftsmen and tool design engineers with decades of experience
- ✓ Latest in advanced manufacturing equipment and technology
- ✓ Full-service design-and-build services
- ✓ One of the largest custom cutting tool manufacturers in the U.S.



ENGINEERED TOOLS INCREASE PERFORMANCE, REDUCE COSTS AND IMPROVE QUALITY

Tools designed with multiple features or multiple tools combined into one operation — many times this can replace three to four standard tools.

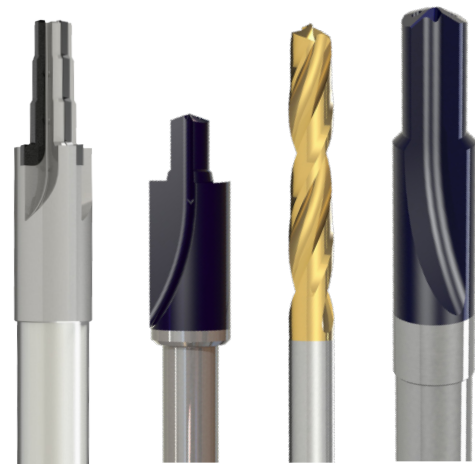
- ✓ Improved product quality
- ✓ Repeatability and increased accuracy
- ✓ Reduced time in cut
- ✓ Faster changeover — less downtime



CUSTOM TOOL MANUFACTURING

Cline Tool's advanced manufacturing equipment, quality control practices and inspection machines guarantee quality and reliability.

- ✓ Custom indexable drills
- ✓ Solid carbide form tools and thread mills
- ✓ Carbide-tipped form and porting tools
- ✓ Modular shanks: HSK, CAT, ABS®, KM™ and CAPTO®
- ✓ Multi-diameter indexable boring bars and reamers
- ✓ Special form inserts
- ✓ Custom tool holders, inserts, cutters, collet chucks
- ✓ Custom carbide step drills
- ✓ Modifications to a standard tool



SPECIAL SOLID CARBIDE AND CARBIDE-TIPPED TOOLS

- ✓ High performance drills and form tools/reamers in a full range of sizes
- ✓ Multiple diameter and steps for machining complex features
- ✓ Coolant-fed in spiral and straight-flute configurations

KM™ is trademark of Kennametal, Inc.
CAPTO® is a registered trademark of Sandvik Coromant
ABS® is a registered trademark of Komet®

PERFORMANCE GUARANTEE

We take quality seriously, so we offer an unconditional performance guarantee on every tool we manufacture. Our reputation is built on a long history of honesty, integrity and standing behind our products. You can expect quality, value and an unwavering commitment to the ultimate customer experience.

■ Learn more at www.ClineTool.com/CustomTools

IN-HOUSE ENGINEERING

Engineering expertise is what separates Cline Tool from everyone else in the industry. Our in-house tool designers understand metal removal and how geometries affect performance and product quality. They specialize in designing custom tools for difficult applications, looking for opportunities to reduce costs while increasing product quality and productivity.

Cline Tool's technical staff provides a full range of engineering services to fill in the gap when your resources are limited.

- ✓ Engineering studies — manufacturing process and tooling improvements
- ✓ Tool design – from concept to fully detailed manufacturing models
- ✓ The latest AutoCAD and SolidWorks modeling software
- ✓ Complete CAD manufacturing drawings
- ✓ On-site engineering support
- ✓ In-depth shop floor analysis and coolant evaluation
- ✓ Tool management and testing programs



PROJECT MANAGEMENT

Whether your company is purchasing a new machine or tooling up a new part, Cline Tool can manage every step of the project. We'll be there from concept, to production and beyond to keep your project on time and within budget.

- Guaranteed quality, cycle time and performance
- On-the-floor technical support, plus testing and training
- Selection of the best tool for the application as part of the package
- Complete documentation package
- Ability to provide all tooling and fixturing
- Tooling packages shipped assembled and tagged



INVENTORY BY MANUFACTURING & ENGINEERING EXPERTS

Cline Tool is unique in the world of industrial distribution – we don't just stock a machine. We use our manufacturing, engineering and procurement expertise to continually track usage, then we'll recommend the most efficient tools and supplies for your manufacturing operation. Choose from automated dispensing units or hand-held scanners with on-site personnel.

INVENTORY CONTROL

- ✓ 24/7 access in secured environment
- ✓ Each transaction is controlled and tracked

AUTOMATED REPLENISHMENT

- ✓ Item plan for each component
- ✓ No PO's for each shipment
- ✓ No excess inventory



AutoCrib automated dispensing units



CLINE TOOL OFFERS
FLEXIBLE OPTIONS &
SIZE CONFIGURATIONS

REDUCE YOUR:

- Consumption of tools 20% - 40%
- Carrying cost and inventory 30% - 60%
- Obsolete inventory
- Stock outages reduced or eliminated
- Wasteful usage: 15% - 30%
- Paperwork

INCREASE YOUR:

- Cost savings
- Production efficiency
- Visibility to your spend
- Use of reconditioned items

FULL-LINE DISTRIBUTOR

DISTRIBUTION DONE DIFFERENTLY

Cline Tool is a full-line distributor, representing the world's most respected suppliers. We have the technical expertise to match the supplier and tool to the job requirement, with a **brand-neutral perspective**.

- ✓ We engage with your organization at the engineering level to accurately identify your manufacturing needs
- ✓ Large industrial distributor with buying power, and the best prices available
- ✓ Documented cost savings
- ✓ Experts at metal removal and machining operations



SANDVIK
COROMANT

CUTTING TOOLS AND MANUFACTURING SUPPLIES:

- | | | | |
|--------------------|----------------------|-------------------|--------------------------|
| ■ Abrasives | ■ Diamond Dressers | ■ Facemills | ■ Retention Knobs |
| ■ Boring Bars | ■ Drills | ■ Fluids | ■ Safety Products |
| ■ Broaches | ■ Endmills & Holders | ■ Gages | ■ Sawing Products |
| ■ Chamfer Cutters | | ■ Hand Tools | ■ Shell Mills |
| ■ Chasers | | ■ Inserts | ■ Small Part Machining |
| ■ Chucks & Jaws | | ■ Knurls | ■ Spade Blades & Holders |
| ■ Collets & Chucks | | ■ Live Tools | ■ Storage |
| ■ Coolants | | ■ Mandrels | ■ Taps & Holders |
| ■ Counterbores | | ■ Measuring Tools | ■ Threadmills |
| ■ Countersinks | | ■ Milling Cutters | ■ Tool Holders & Systems |
| ■ Cutters | | ■ Power Tools | ■ Vises/Clamps |
| | | ■ Reamers | ■ Workholding |



NORTON
SAINT-GOBAIN

TOOL RECONDITIONING

HIGH PERFORMANCE TOOLS REQUIRE HIGH QUALITY TOOL RECONDITIONING

It's no secret that reconditioning metal cutting tools will extend the life of the tools and reduce your overall tool spend, so why is Cline Tool the best choice? We're a manufacturer too, and our equipment is set up for both manufacturing *and* tool reconditioning.



NOT ALL REPAIR COMPANIES ARE EQUAL

- ✓ Repair costs based on actual damage
- ✓ Reduces your tool spend
- ✓ Restored to original factory specifications and quality for consistent, superior performance
- ✓ Latest technology in tool manufacturing and inspection equipment
- ✓ Skilled tool craftsmen and engineers with decades of experience
- ✓ Returned with all hardware and components
- ✓ 100% Unconditional Satisfaction Guarantee

■ Learn more at www.ClineTool.com/LongLiveYourTools

CLINE TOOL REGRINDING DIVISION

HIGH PERFORMANCE TOOL REGRIND AND RECOAT SERVICES

- ✓ High-precision tool regrinding
- ✓ State-of-the-art equipment
- ✓ Quality control and comprehensive inspection processes
- ✓ Complete recoating services available: TiN, TiCN and TiALN



1.866.561.3022 | www.ClineTool.com

Headquartered in Newton, Iowa Since 1948 | Locations in Houston, TX , Fletcher, NC, Rockford, IL & Indianapolis, IN